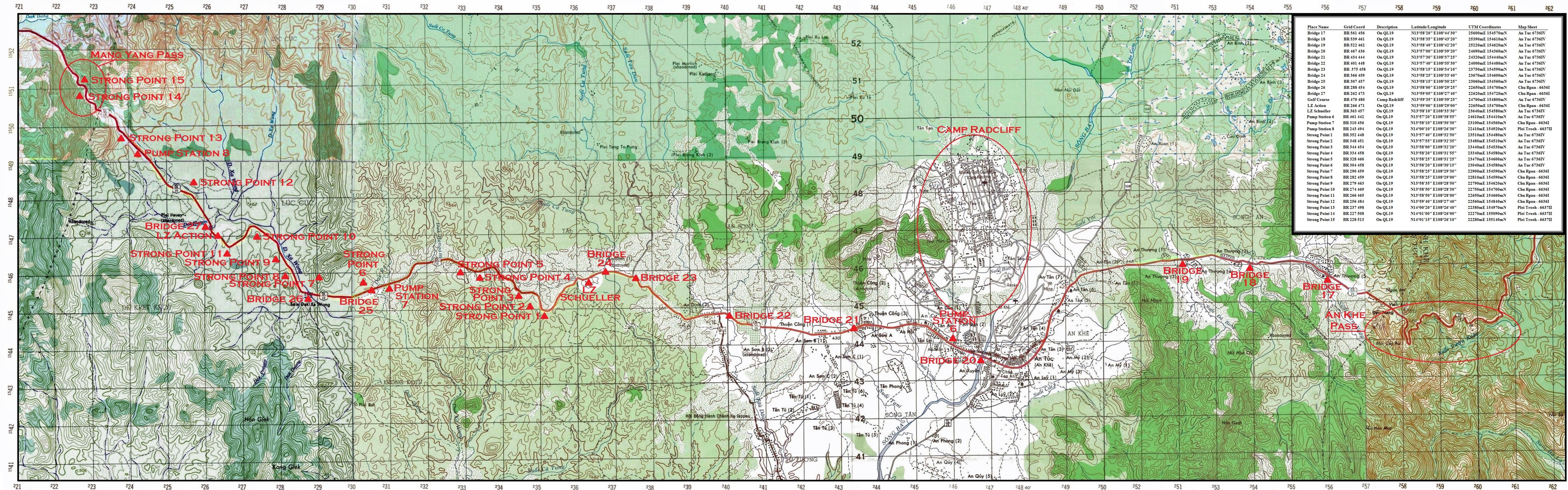


# 1ST BATTALION (MECHANIZED), 50TH INFANTRY

## AREA OF OPERATIONS, AUGUST, 1968, TO APRIL, 1969

### QL (HIGHWAY) 19 BETWEEN THE AN KHE AND MANG YANG PASSES



Place Name	Grid Coord	Description	Latitude-Longitude	UTM Coordinates	Map Sheet
Bridge 17	BR 561 456	On QL19	N13°58'20" E108°44'30"	25000E 154700N	An Tuc 6736IV
Bridge 18	BR 539 461	On QL19	N13°58'35" E108°43'20"	25390E 154610mN	An Tuc 6736IV
Bridge 19	BR 522 462	On QL19	N13°58'40" E108°42'20"	25220E 154620mN	An Tuc 6736IV
Bridge 20	BR 467 436	On QL19	N13°57'00" E108°39'20"	24690E 154360mN	An Tuc 6736IV
Bridge 21	BR 434 444	On QL19	N13°57'30" E108°37'25"	24320E 154400mN	An Tuc 6736IV
Bridge 22	BR 401 448	On QL19	N13°57'40" E108°35'30"	24000E 154480mN	An Tuc 6736IV
Bridge 23	BR 375 458	On QL19	N13°58'15" E108°34'10"	23750E 154580mN	An Tuc 6736IV
Bridge 24	BR 366 459	On QL19	N13°58'25" E108°33'40"	23670E 154600mN	An Tuc 6736IV
Bridge 25	BR 307 457	On QL19	N13°58'15" E108°30'25"	23060E 154560mN	An Tuc 6736IV
Bridge 26	BR 288 454	On QL19	N13°58'00" E108°29'25"	22650E 154700mN	Chu Rpan - 6636I
Bridge 27	BR 262 473	On QL19	N13°59'05" E108°27'40"	22620E 154720mN	Chu Rpan - 6636I
Golf Course	BR 470 480	Camp Radcliff	N13°59'35" E108°39'25"	24700E 154800mN	An Tuc 6736IV
LZ Acton	BR 266 471	On QL19	N13°59'00" E108°29'00"	22650E 154700mN	Chu Rpan - 6636I
LZ Schueller	BR 363 457	On QL19	N13°58'10" E108°33'30"	23640E 154580mN	An Tuc 6736IV
Pump Station 6	BR 461 442	On QL19	N13°57'20" E108°38'55"	24610E 154410mN	An Tuc 6736IV
Pump Station 7	BR 310 456	On QL19	N13°58'10" E108°30'30"	23100E 154560mN	Chu Rpan - 6636I
Pump Station 8	BR 243 494	On QL19	N14°00'10" E108°26'30"	22410mE 154920mN	Plei Troch - 6637II
Strong Point 1	BR 352 448	On QL19	N13°57'40" E108°32'50"	23510E 154480mN	An Tuc 6736IV
Strong Point 2	BR 348 451	On QL19	N13°57'55" E108°32'35"	23480E 154510mN	An Tuc 6736IV
Strong Point 3	BR 344 454	On QL19	N13°58'00" E108°32'20"	23440E 154530mN	An Tuc 6736IV
Strong Point 4	BR 334 458	On QL19	N13°58'20" E108°31'55"	23340E 154580mN	An Tuc 6736IV
Strong Point 5	BR 328 460	On QL19	N13°58'25" E108°31'25"	23470E 154600mN	An Tuc 6736IV
Strong Point 6	BR 304 458	On QL19	N13°58'20" E108°30'15"	23040E 154580mN	An Tuc 6736IV
Strong Point 7	BR 290 459	On QL19	N13°58'25" E108°29'30"	22900E 154590mN	Chu Rpan - 6636I
Strong Point 8	BR 282 459	On QL19	N13°58'25" E108°29'00"	22810E 154590mN	Chu Rpan - 6636I
Strong Point 9	BR 279 463	On QL19	N13°58'35" E108°28'50"	22790E 154620mN	Chu Rpan - 6636I
Strong Point 10	BR 274 469	On QL19	N13°58'50" E108°28'30"	22750E 154700mN	Chu Rpan - 6636I
Strong Point 11	BR 266 465	On QL19	N13°59'00" E108°29'00"	22650E 154660mN	Chu Rpan - 6636I
Strong Point 12	BR 256 484	On QL19	N13°59'40" E108°27'40"	22560E 154840mN	An Tuc 6736IV
Strong Point 13	BR 237 498	On QL19	N14°00'20" E108°26'40"	22380E 154970mN	Plei Troch - 6637II
Strong Point 14	BR 227 508	On QL19	N14°01'00" E108°26'00"	22270E 155090mN	Plei Troch - 6637II
Strong Point 15	BR 228 513	On QL19	N14°01'15" E108°26'10"	22280E 155140mN	Plei Troch - 6637II